

Thinking Reproduction

By: Mark Carson, Gencor Reproductive Analyst

Mastitis and Reproductive Performance

Udder health can affect your herd's reproductive performance. An interesting study published in the Journal of Dairy Science looked at the occurrence of clinical mastitis with the probability of conception in Holstein dairy cows.

The Cornell University study looked at the results of 55,372 artificial inseminations from 14,148 cows in seven New York State herds over a period of three- to five-years, depending on the herd.

The results showed cows with clinical mastitis – occurring anytime between 14 days before breeding until 35 days after insemination – had a reduced chance of getting pregnant. In the week prior to breeding, cows that developed mastitis were found to have a 50% reduction in the probability of conception.

The greatest impact was seen in cows with gram-negative bacteria, (coliforms like E.coli) in the week after insemination. These cows saw an 80% reduction in the probability of becoming pregnant. Cows with gram-positive bacteria (Streptococcus spp. Staph. aureus, etc.) occurring in the week after insemination had a 47% reduction in conception, as well.

This work highlights the importance of the cow's udder health and reproductive performance. Reducing mastitis, through environmental, milking and transition management will not only improve your quality of milk, but can also increase conception.

For more information about improving your herd's reproductive performance, please talk to your Gencor representative.

Gencor Announces 2010 Board of Directors

Brian Anderson of Athlone Farms, Tavistock, was elected Gencor President, at a Board of Directors meeting held immediately following Gencor's Annual Meeting, on March 30, 2010, at the Holiday Inn, Cambridge, Ontario. Representing Perth County, Anderson has 11 years of experience on the Gencor Board, three specifically as an Executive Member.

Brian Betts, Bristol Holsteins, Flesherton, was elected to the position of Vice President to the Gencor Board of Director's Executive Committee. As a Board Member, Betts represents Grey and Dufferin Counties with seven years of service.

Norm McNaughton, of Comrie Farms, London, was re-elected to the Gencor Board of Director's Executive Committee. As a Board member, McNaughton represents the Middlesex, Elgin, Lambton, Kent & Essex regions with six years experience and represents Gencor on the Semex Alliance Board of Directors.

Bart Johnson of Belridge Farms, Sutton West, will also join the Gencor Board of Director's Executive Committee. As a Board member, Johnson represents the regions of York, Peel and Halton with 11 years experience.

New to the Gencor Board of Directors is **Peter Schuttel**, Goderich, who will represent Huron County.

Continuing to represent their regions as Directors on the Gencor Board are **Mike Haelzle**, Mildmay, representing Bruce County; **David Larmer**, Blackstock, representing Victoria, Peterborough and Durham Counties; **Lloyd Roseboom**, Port Colborne, representing the Niagara North and South, Haldimand and Wentworth regions; **John Vanthof**, Earlton, representing Northern Ontario; **Dennis Wagler**, New Hamburg, representing Waterloo and Wellington Counties; **Gerrit Wensink**, Innerkip, representing the Oxford, Brant and Norfolk region; and **Robert Wright**, Midhurst, representing Simcoe County.

General Manager Brian O'Connor was reappointed as Board Secretary and Nellie Endeman was reappointed as Treasurer to the Board, respectively.



Gencor Update

Keeping Gencor's Membership Informed

May 2010

April 2010 Proof Highlights

The Spring 2010 Genetic Evaluation release certainly put a breath of fresh air into the Gencor sire line-up. There are several "new faces" in our proven Sire Line, Genoline and Red & White Line. Once again, Semex has the distinction of owning the highest new release sire, Canyon-Breeze ALASKA.

New Additions to the Holstein Sire Line

Canyon-Breeze ALASKA (GP-SP'10) (Laudan x BW Marshall x Storm) Alaska is proven right here in the Gencor area and makes his debut with an impressive GLPI of 2039. From the family that gave us the popular Canyon-Breeze Allen, this Laudan son has already achieved Superior Production status based on his milk volume along with solid component deviations of +.12% Fat and +.13% Protein. Alaska also excels in health traits with 106 Herd Life, 101 Calving Ability and 2.78 SCS. Alaska daughters are angular, strong, deep bodied cows who excel in mammary system. Udders are silky textured with deep median suspensory ligament and wide rear attachment. Ideally suited for all management systems, Alaska daughters are rugged dairy cows with a very desirable depth of heel. Alaska is a logical mating on daughters of Bonair, Dolman, Samuelo and Dundee.

Stantons STEADY (EX-EXTRA'10) (Mr Sam x Convincer x Rudolph) Steady comes from the heart of the popular Stress family and is our first proven son of Mr Sam, achieving "Class Extra" status on his very first proof release. Outstanding in many categories, Steady is a component specialist at +.52% Fat and +.09% Protein. Steady sits in the top 1% of the breed for Conformation at +14 and carries a no holes proof with not one nega-

tive trait in his entire conformation breakdown. A true "Dairy Strength" bull, Steady daughters are angular, deep bodied and wide chested with silky well attached mammary systems. They are strong loined with ideal rump structure. As an added bonus, Steady is a calving ease sire with a herd life of 105 and SCS of 2.99. Double digit for Mammary System, Feet & Legs and Dairy Strength makes Steady a logical mating on Buckeye, Final Cut, Goldwyn, Morty and Tee Off daughters.

Regel BACHELOR (VG-ST'10) (Laudan x Stormatic x Bellwood) Bachelor is a welcomed new addition to the Sire Line and makes his debut as one of the best feet & legs bulls in the industry at +14. Daughters are clean boned with ideal ratings for leg set and rear leg rear view. Also positive for foot angle and heel depth the Bachelor daughters are very mobile and travel well on their feet & legs. Bachelor is a dairy strength sire giving beautiful chest width, angularity, body depth and ideal stature. Low on SCS at 2.82 the Bachelor daughters are a pleasure to work with, having a milking temperament of 109. Bachelor mates well on typical daughters of Talent, Spirte, Income, Outside and Final Cut.

Highlights for the Proven Sires

Semex's popular sires like Crockett-Acres Eight, Morningview Ashlar and Dudoc Mr Burns stayed very strong and solidly hold the #5, 6 and 7 GLPI positions. Mainstream Manifold is our highest GLPI sire at +2733 (GMACE) plus, the popular type sire, Rietben Tee Off adds more than a dozen daughters and is still our best active sire for type at +15 Conformation. Check out our "Semen Special" for fabulous discounts on these "Breed Leading Sires".

Continued on page 2...

Gencor Dairy Challenge 2010
Information Package and Registration Forms
have now been Mailed Out

~ Also Available On the Gencor Website ~

www.gencor.ca/programs

DUE: FRIDAY, JUNE 4, 2010

April 2010 Proof Highlights... Continued

GENOLINE - Genomic Young Sires

The success of Genoline since being introduced in January has expanded our offering of these high genomic young sires. Five exciting new bulls have been added along with two bulls now being available with sexed semen.

Wabash-Way EVOLVE (Bolton x Shottle x Oman)

Sired by Bolton, the #1 LPI sire and from one of the most sought after families of the breed! At +3091 GPA LPI it's the family that dominates the LPI / TPI lists – the famous Elly's.

Hendel MISCHIEF (Bolton x Shottle x Durham)

Another outstanding pedigree with Mischief's full sister already commanding A.I. attention.

Rockymountain TAILOR (Baxter x Goldwyn x Allen)

An exciting Baxter son from the Tammy Allen family, Tailor is the best genomic tested Baxter son for Conformation at +17.

Ardross STERLING (Mr Burns x Shottle x Freelance)

The #1 genomic tested Mr Burns son in the industry from a former #1 GLPI cow. Fabulous Sterling calves are already on the ground plus the added bonus of being a Red Factor sire!

Gillette JORDAN (Goldwyn x Durham x Leadman)

The excitement has already started on this popular Goldwyn son who is currently 75% GP on his milking daughters. Your chance to get in early!

Red & White Sires - Sure-View AUDACITY-Red is our new addition in January 2010. Audacity has moved up nicely in production adding over 300 kgs Milk, 14 kg Fat and 11 kgs Protein. He also gains a point on Conformation. **Greenlea ARTIE-Red**, a popular "Cardinal Series," now has the added bonus of sexed semen being available on a pre-order basis. Contact your Gencor Representative for details and pricing. **Plattery Talent LEONARD (Talent x Rubens)** - From Swiss Genetics and available on a pre-order basis, this Talent son offers calving ease, easy milking and high herd life.

New Additions to the Colour Breed Sire Line

AYRSHIRE - Chaluka KILOWATT

(Tradition x Dropstad x Willy) Kilowatt debuts at 1640 LPI making him one of the top 20 sires of the breed. Daughters are outstanding for Feet & Legs (+13) with flat bone, deep heel and correct leg set. Udders are silky and well attached.

BROWN SWISS - Hilltop Acres GOLDMINE

(Dynasty x Dalton x Emory) Our new addition in January has increased his daughter numbers and doubled his production numbers as well as moving him up to over +1200 for LPI. **Hanny Swiss Ace WAGOR**, a popular Swiss Genetics sire had been previously removed from the active list due to low semen inventory. The remaining semen is for sale on a pre-order basis only.

GUERNSEY - Rutter Bros Lewis LOUIE

(Lewis x Fayette x Protein King) Louie is a new release sire that excels in components being +.20% Fat and +.03% Protein. Correct through their top line and rump structure, daughters excel in Set of Rear Leg, Foot Angle and Bone Quality.

JERSEY - The exciting new advancement in the Jersey breed is the inclusion of Genomics into the sire genetic evaluations. This leading edge genetic tool is certainly a welcome enhancement to Jersey sire proofs.

Lencrest TYLER (Laser x Declo x B Major), our first Laser son proven comes from the renowned Piedmont Declo Belle EX-94. Tyler is the third proven son from Belle and he joins On Time and Blackstone on our proven sire line-up. Tyler is solid across his conformation ratings and he excels in Dairy Strength at +11. A component specialist, Tyler carries a nice volume of milk with +.21% Fat and +.15% Protein.

Sunset Canyon DICE, a new addition in January 2010, has moved up to +5 on Conformation and increased his LPI by nearly 100 points to +1542 GLPI. A component specialist, Dice boasts an impressive +.75% Fat and +.35% Protein.

Wabash-Way EVOLVE

Bolton x Shottle x O Man 0076HO00579 / 0200HO76579

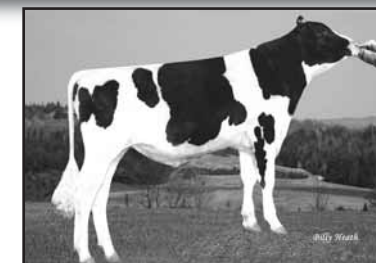


Dam: Wabash-Way Emilyann VG-88-2YR-USA
Former #1 CTPI Cow
Grandam: Crockett-Acres Eliita VG-87-4YR-USA
Former #1 CTPI Cow



GPLI	3091
Milk	2540 kg
Fat	82 kg
% Fat Deviation	-.10
Protein	70 kg
% Protein Deviation	-.13
Conformation	+15
Mammary System	+16
Feet & Legs	+10
Dairy Strength	+8

(CDN/04-10)



Reg#: HOUSAM139198016
Born: 2007 Dec. 08
aAa: 342156



Duckett-SA FREMONT

Goldwyn x Roy x Sam 0200HO02554



Dam: Harvue Roy Frosty EX-95-5YR-USA
All-American & All-Canadian 5 Yr Old 2009
Supreme Champion WDE 2009
Reserve Grand Champion RWF 2009



GPLI	2004
Milk	1198 kg
Fat	59 kg
% Fat Deviation	+.15
Protein	36 kg
% Protein Deviation	-.04
Conformation	+11
Mammary System	+11
Feet & Legs	+8
Dairy Strength	+9

(CDN/04-10)



Reg#: HOUSAM139716674
Born: 2009 Jan. 14
aAa: 612453

